

1440 **broadway**

23rd Floor | 21,466 RSF | Available Immediately

CBRE



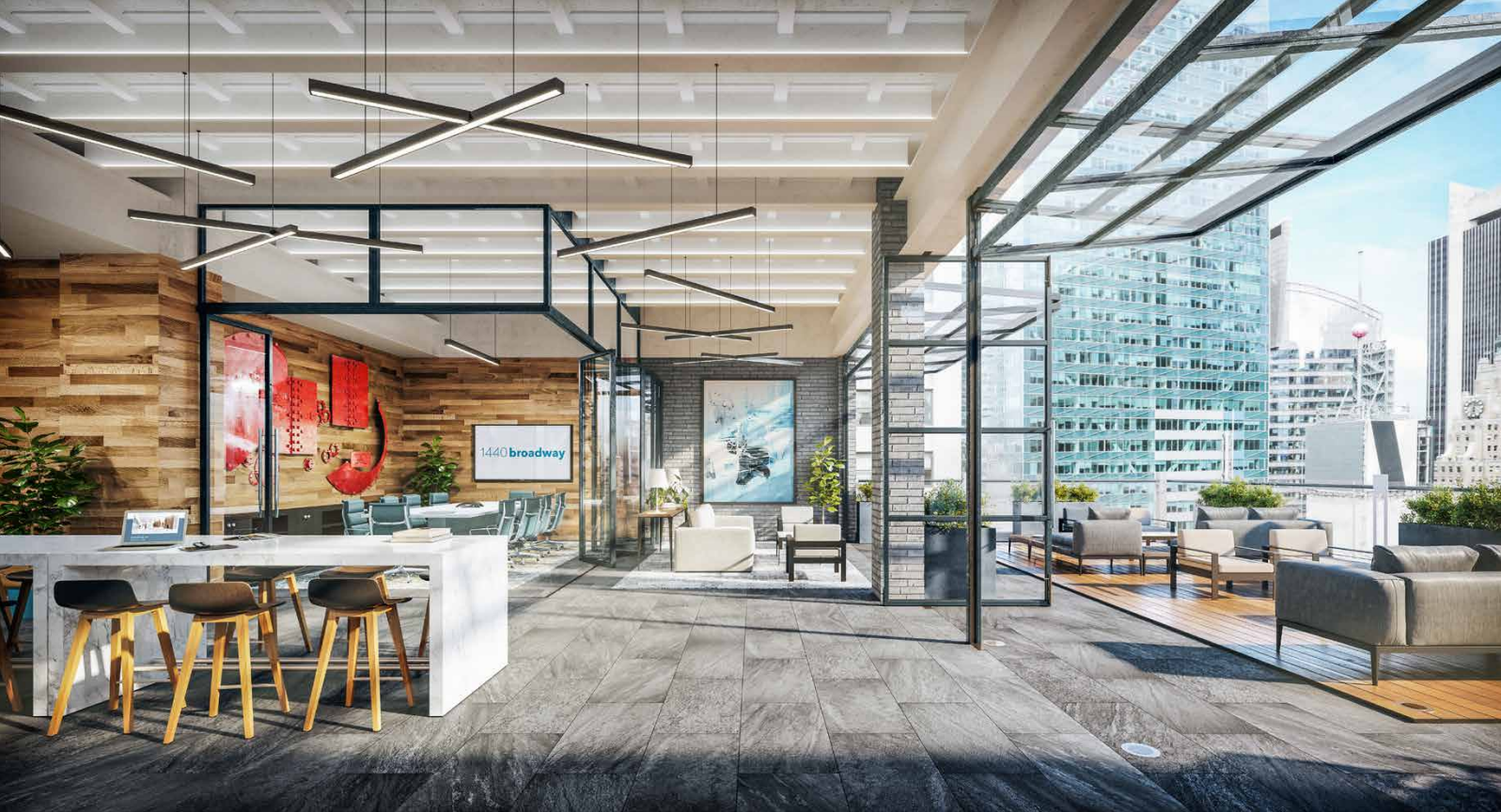


CIM Group is proud to usher in a new era for 1440 Broadway, the iconic 25-story, 745,000 square-foot tower anchoring the corner of Broadway and 40th Street in Midtown, one block from Bryant Park. Ownership has recently completed a comprehensive capital improvement program.

RECENTLY COMPLETED CAPITAL IMPROVEMENTS

- New rooftop amenity featuring tenant lounge, conference facility and outdoor terrace
- New main entrance on 40th Street
- Fully renovated lobby





■ Tenant-exclusive lounge and roof deck

■ Sample Installation



23rd Floor | 21,466 RSF

CREATIVE TEST FIT

Offices: 8

Workstations: 101



FLOOR PLAN

2

23rd Floor | 21,466 RSF

HIGH-DENSITY TEST FIT

Offices: 3

Workstations: 127



FLOOR PLAN

7 min
 PORT AUTHORITY
 BUS TERMINAL

A C E 1 2 3
 N Q R W 7 S

12 min
 GRAND CENTRAL
 TERMINAL

4 5 6 7 S

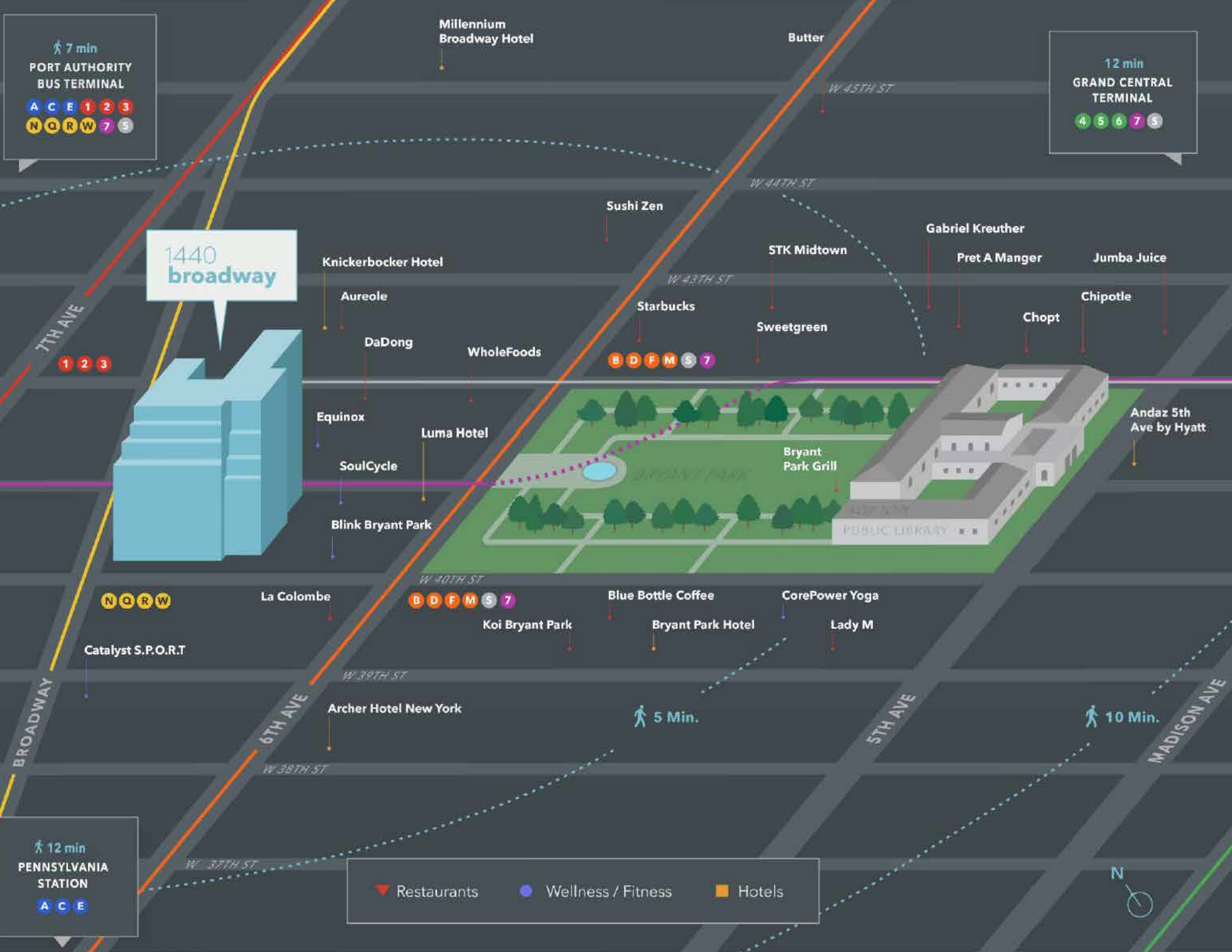
1440
 broadway

7TH AVE
 1 2 3
 N Q R W
 BROADWAY
 6TH AVE
 W 38TH ST
 W 37TH ST
 W 36TH ST

12 min
 PENNSYLVANIA
 STATION

A C E

Restaurants Wellness / Fitness Hotels



PLEASE CONTACT

HOWARD FIDDLE

Vice Chairman
212.984.6525
Howard.Fiddle@cbre.com

PAUL AMRICH

Vice Chairman
212.984.8122
Paul.Amrich@cbre.com

NEIL KING

Vice Chairman
212.984.8352
Neil.King@cbre.com

BRAD GERLA

Executive Vice President
212.984.7153
Brad.Gerla@cbre.com

CAROLINE MERCK

Senior Associate
212.984.8336
Caroline.Merck@cbre.com

